

Division of Occupational & Professional Licenses

Building, Construction & Real Estate Bureau

By Michael Hyde – Executive Officer & Operations Manager

Overview



Engineering & Surveying
Program Update



Idaho Building
Safety Code Rules

2018 IRC Parts I,
II, III & IV
2018 IBC
2018 IEBC
2018 IECC

Engineering & Surveying Program Updates



Bureau Functions & Teams

Board Support

- Agendas
- Travel Arrangement
- Minutes

Investigations

- Complaints
- Violations
- Reporting

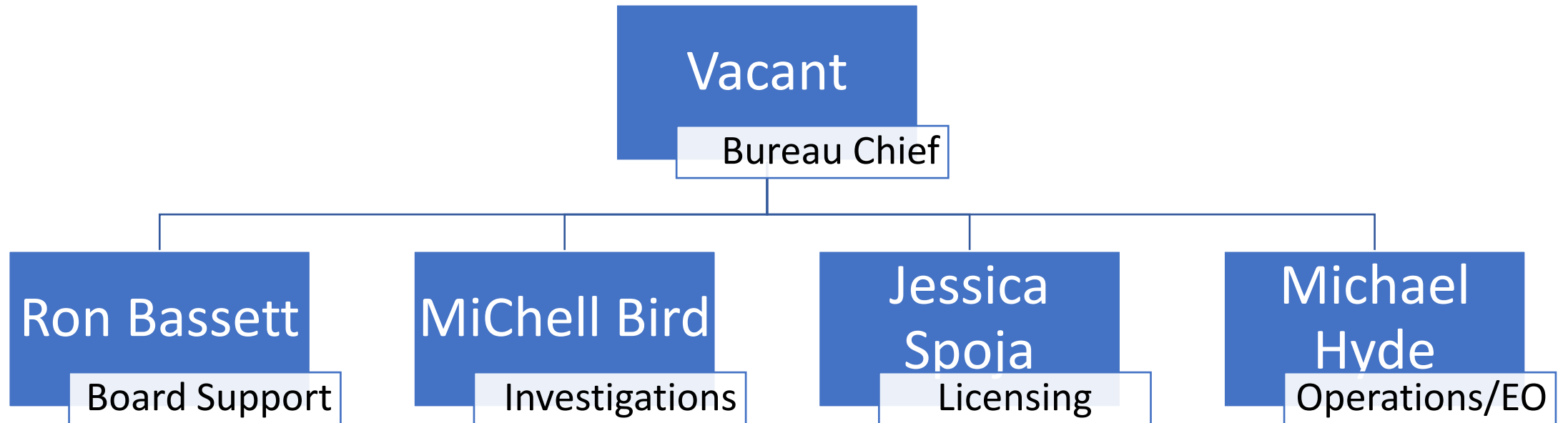
Licensing

- Applications
- Renewals
- Examinations

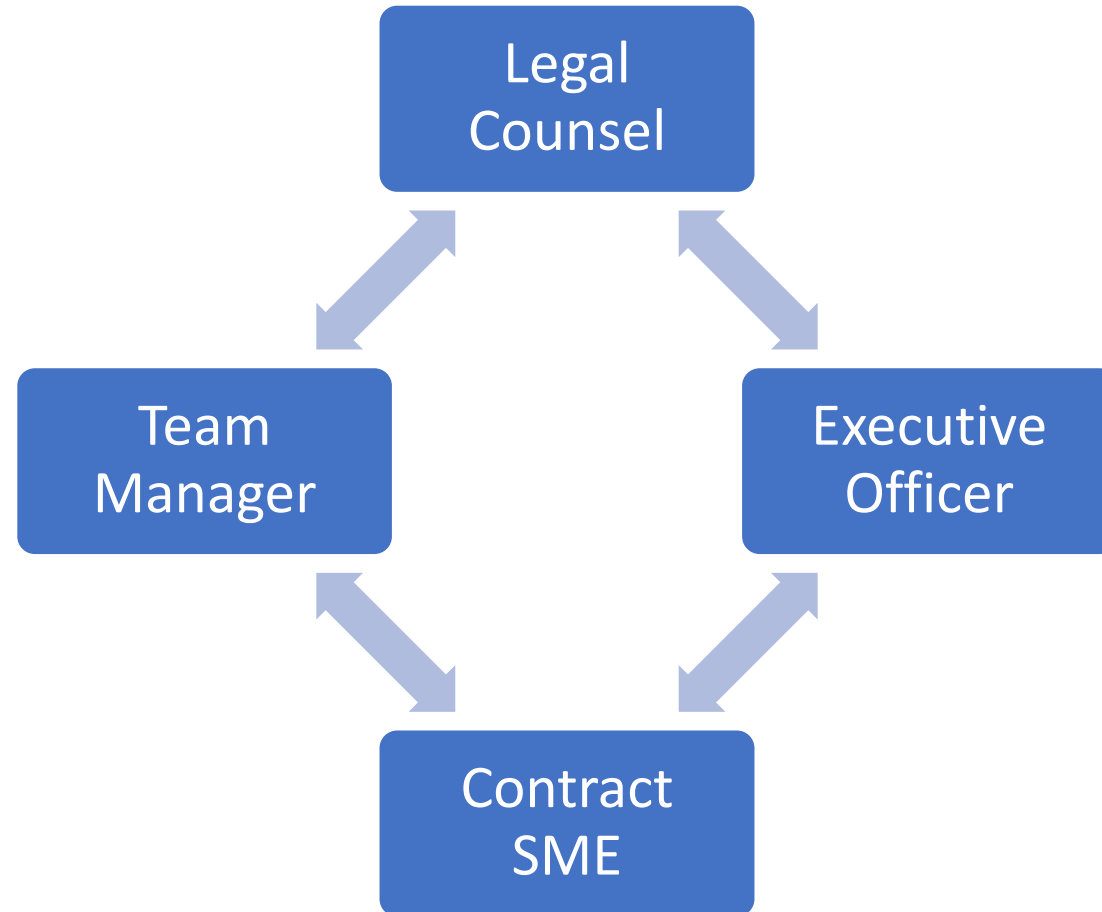
Operations

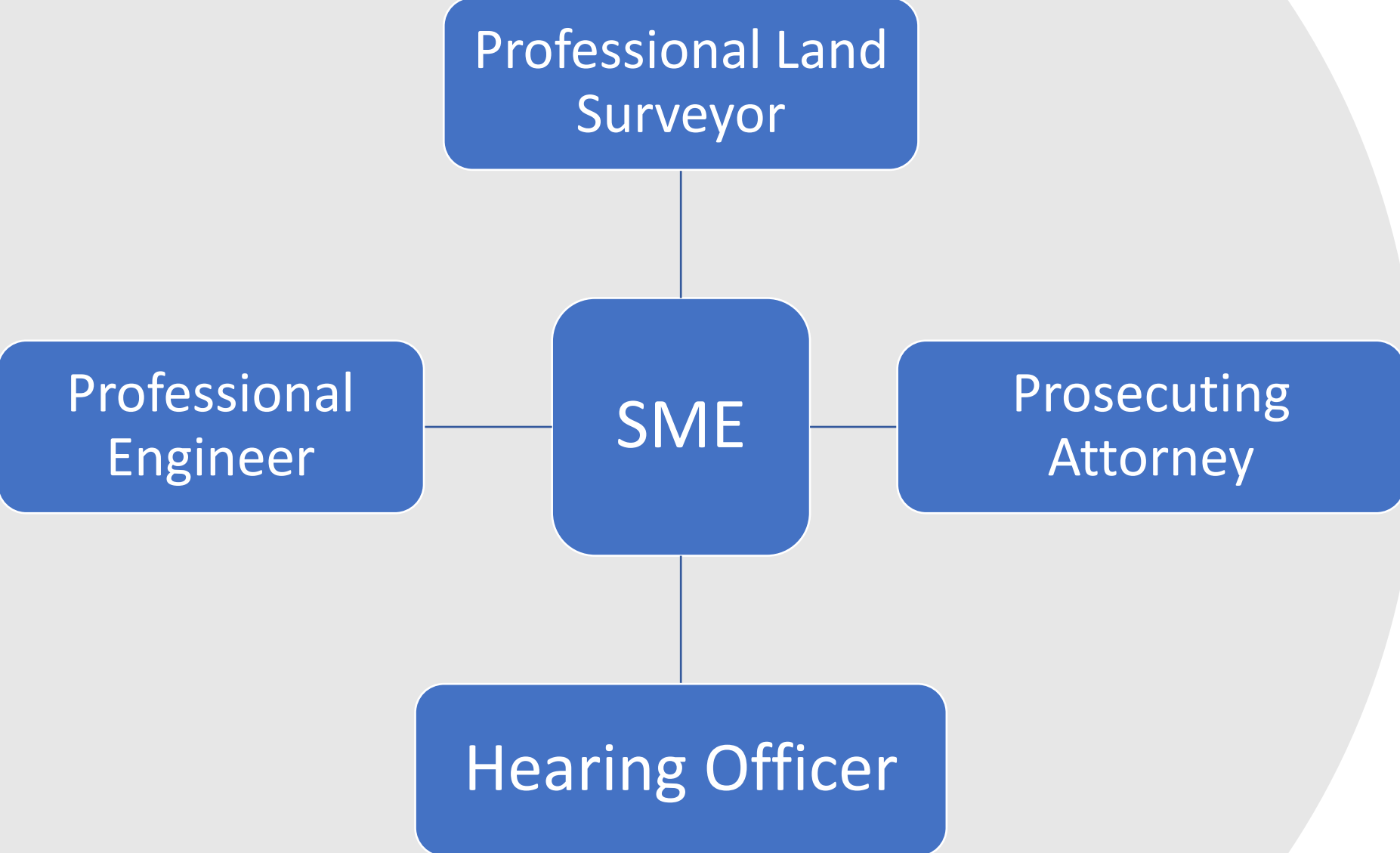
- Permitting
- Plan Reviews
- Inspections

BCRE Org Chart



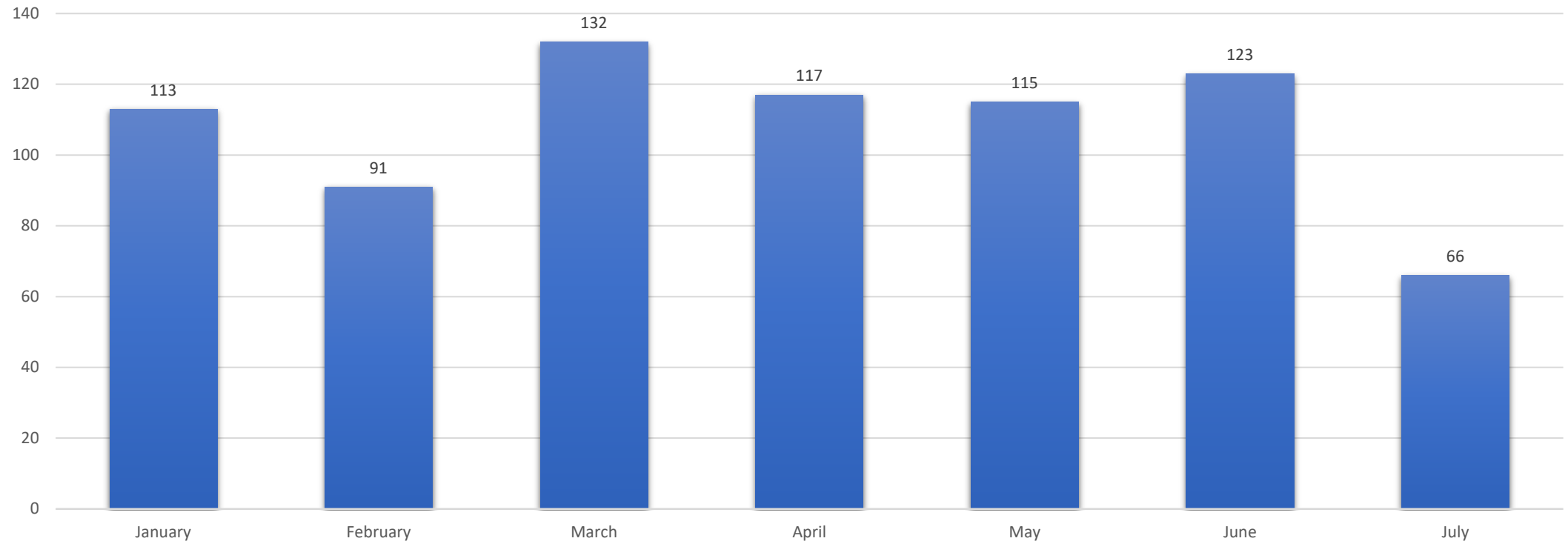
Bureau's Team to Support the Board



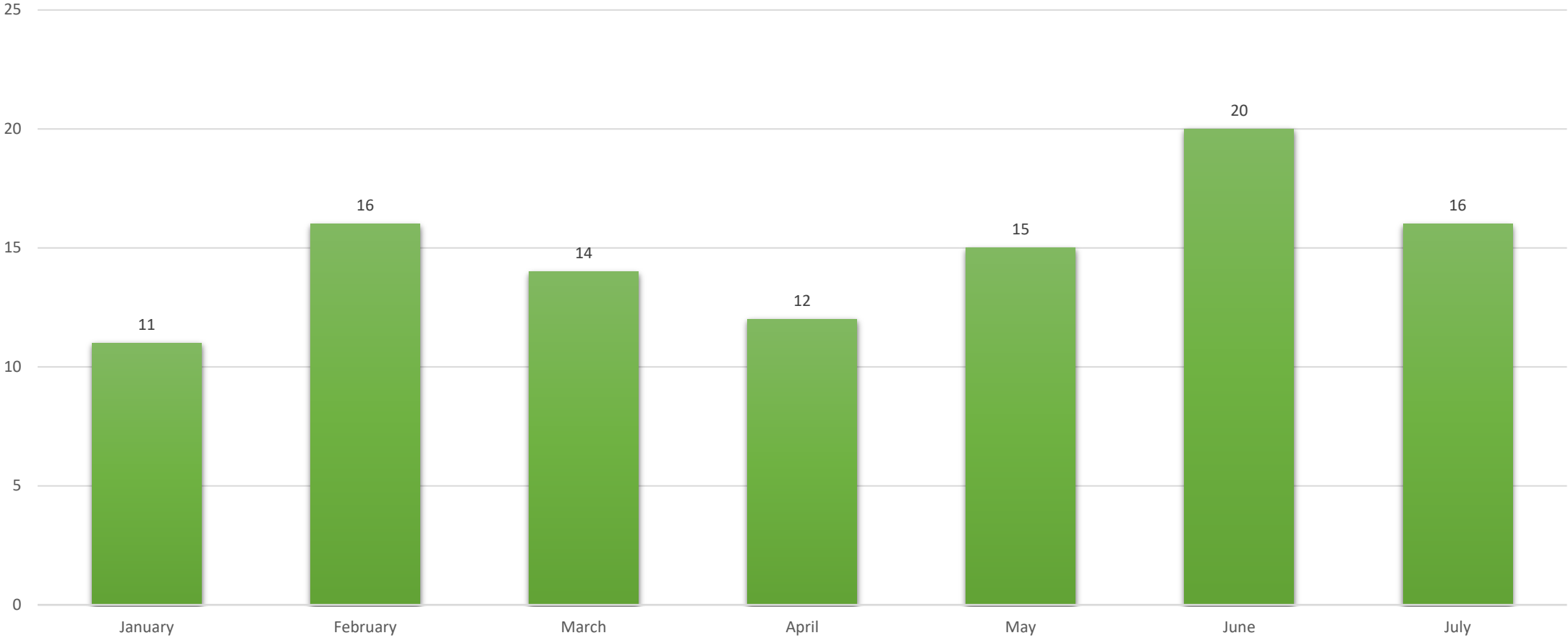


License Update

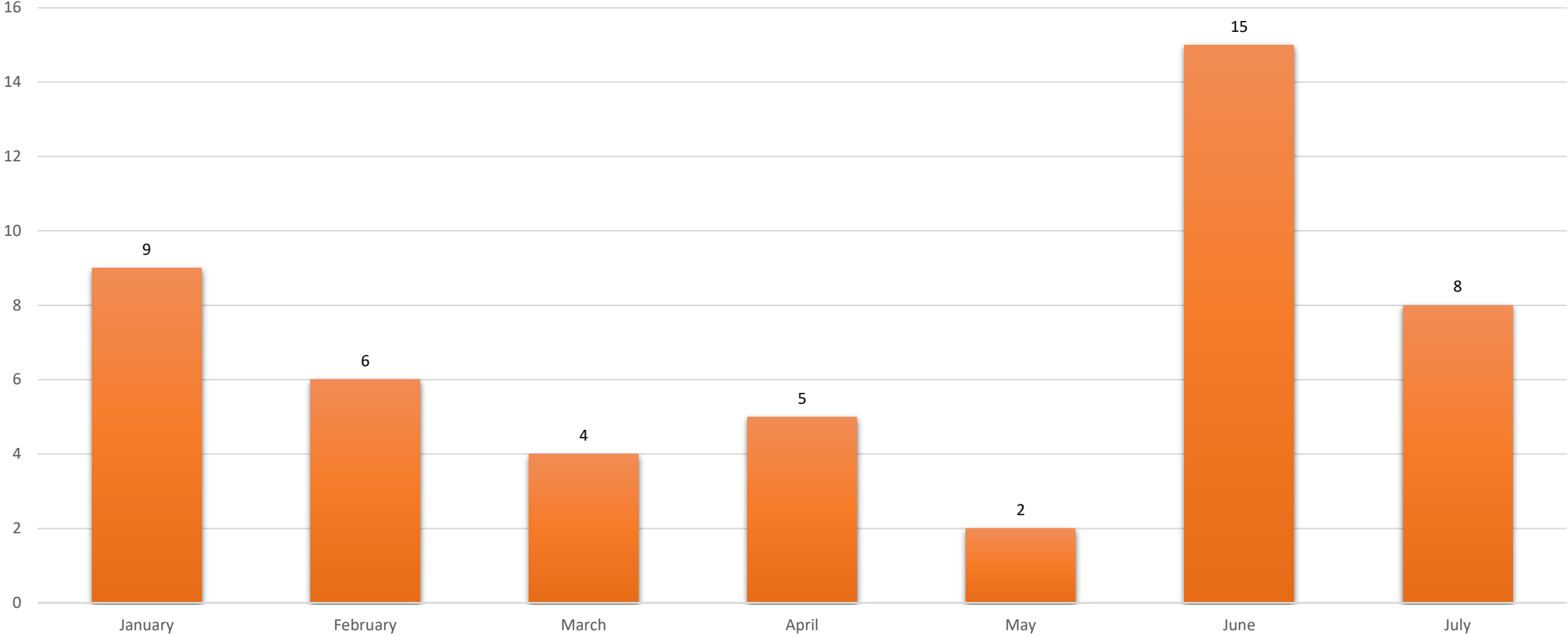
Total # of Licenses Issued



Avg # of Days Applicants take to Provide Docs



Avg # of Days to Issue License



Legislation Update

Senate Bill – S1235

Aligns definitions for clarity

Alternative methods of signing documents

Allows new options for a basis of bearings on surveys

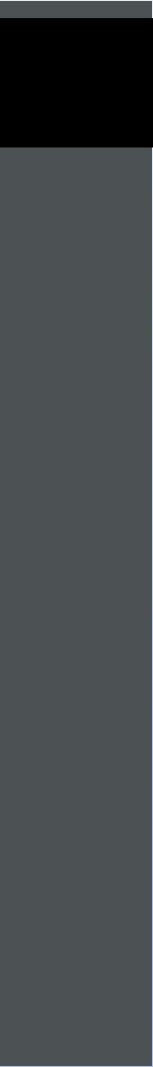
Allows additional options for monuments used as references

Reduces repetitive work and lends stability to property boundaries



Alternate Methods for Signing Documents

- Taking a more permissive approach
- Removed the definition of “signature”
- Handwritten signature isn’t mandatory
- Allows for any variation of signature



Building Safety Codes Proposed Rule Amendments

Zero-based Regulation Executive Order

1

Are the benefits of the rule being achieved?

2

Do those benefits out-weigh the cost (if any) of the rule?

3

Are there less-restrictive methods to achieving these benefits?

Proposed Amendments to 2018 IECC

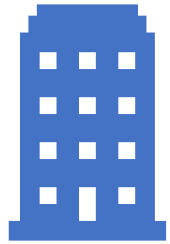
Commercial Provisions

- Allows Designers more flexibility to accommodate consumer needs

Residential Provisions

- Removes regulatory barriers that directly affect consumer choice

Examples



Building



HVAC



Electrical

Questions?

Contact Information:

Michael.hyde@dopl.idaho.gov

(208) 615-0696