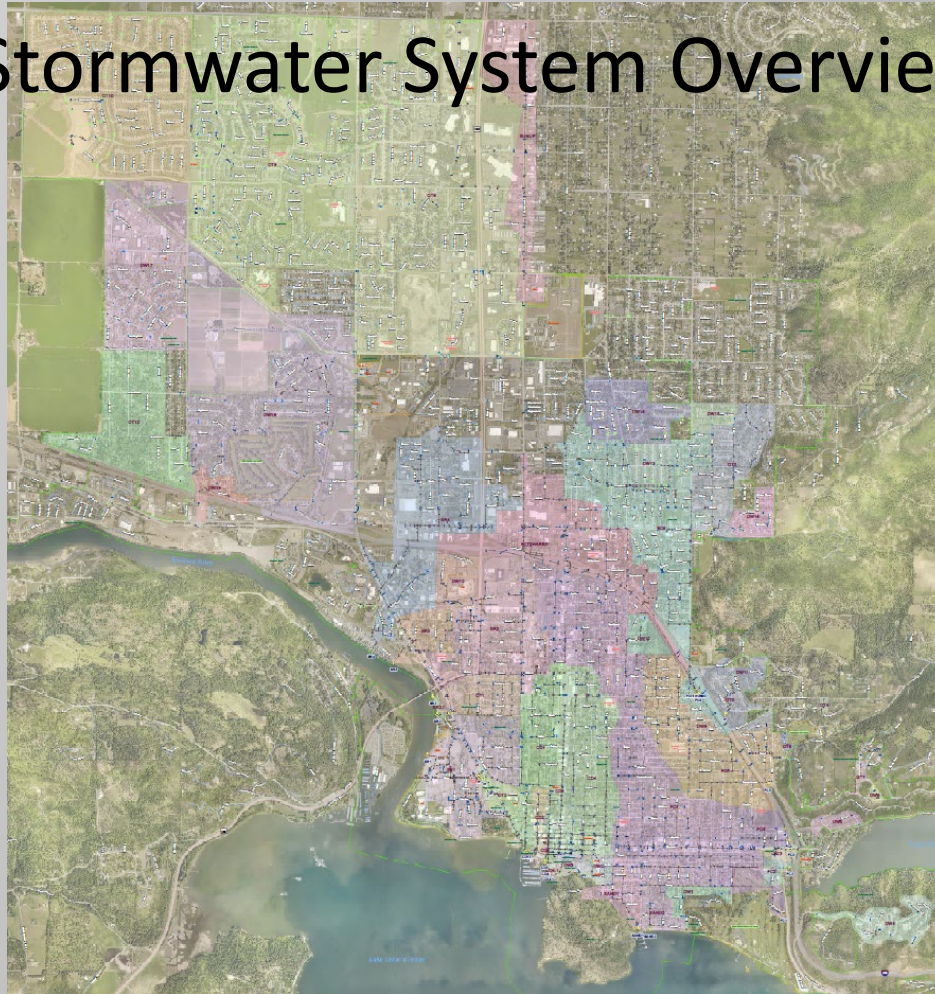


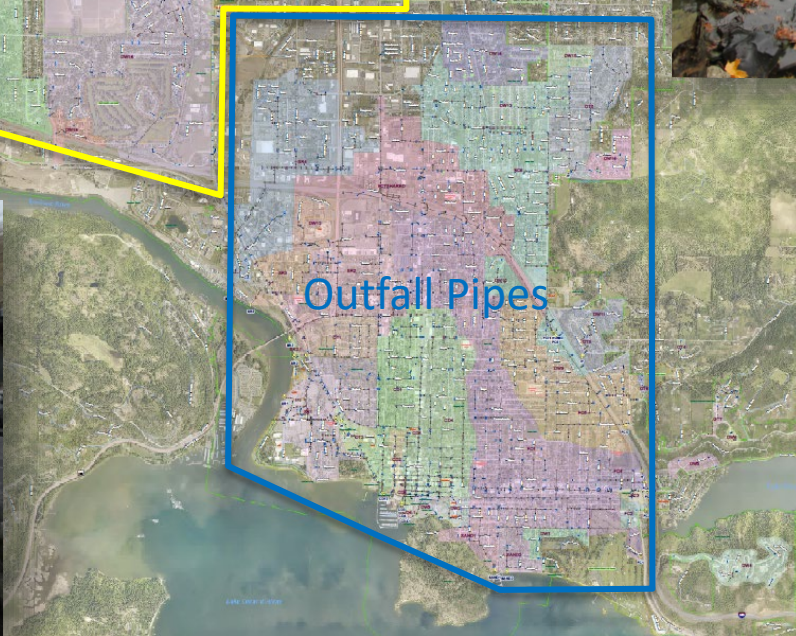
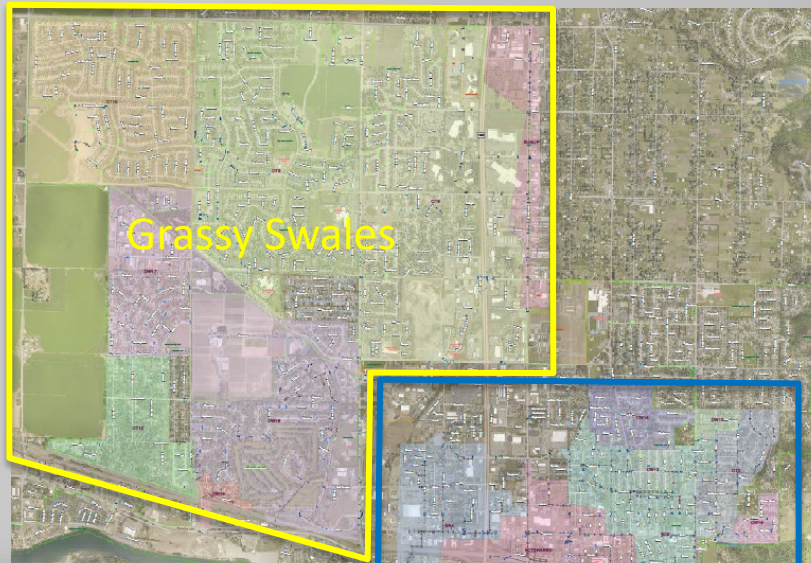
City of Coeur d'Alene Stormwater Outfall Volume Reduction Plan



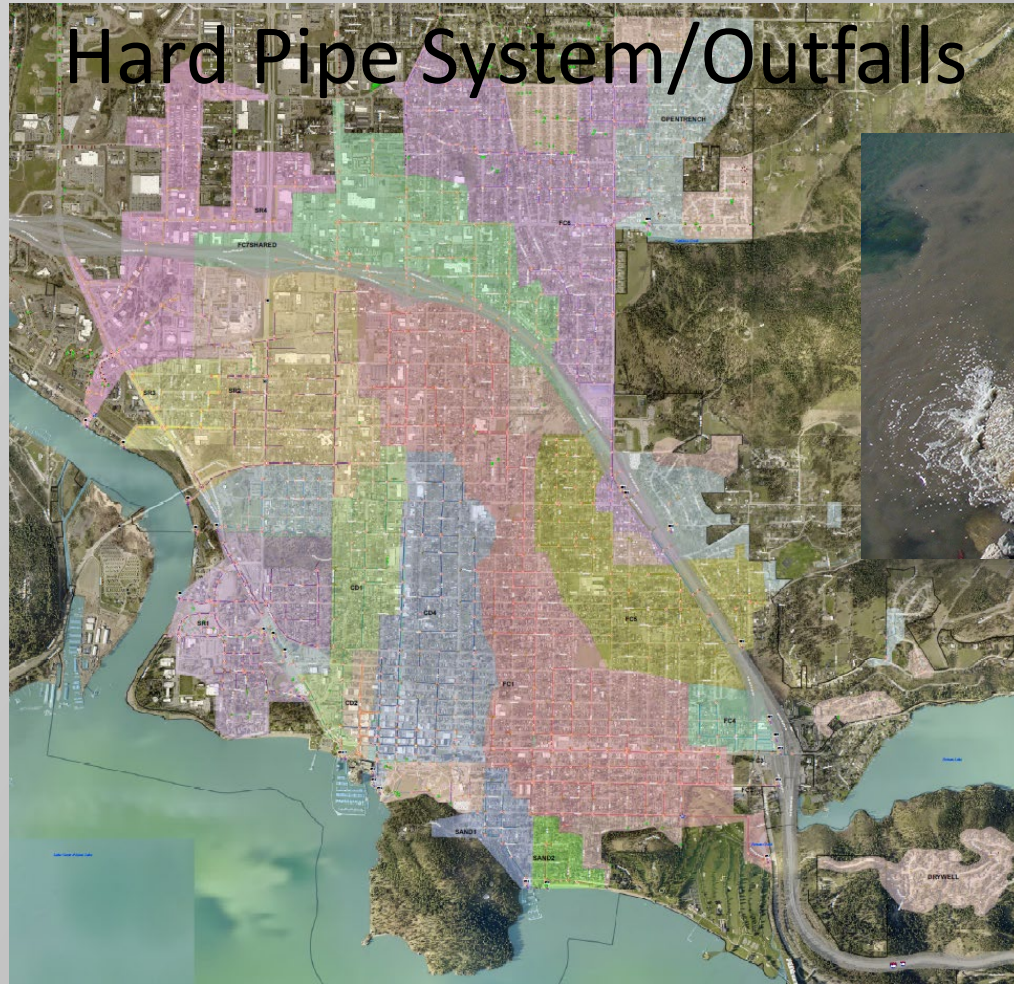
September 8, 2022

Stormwater System Overview

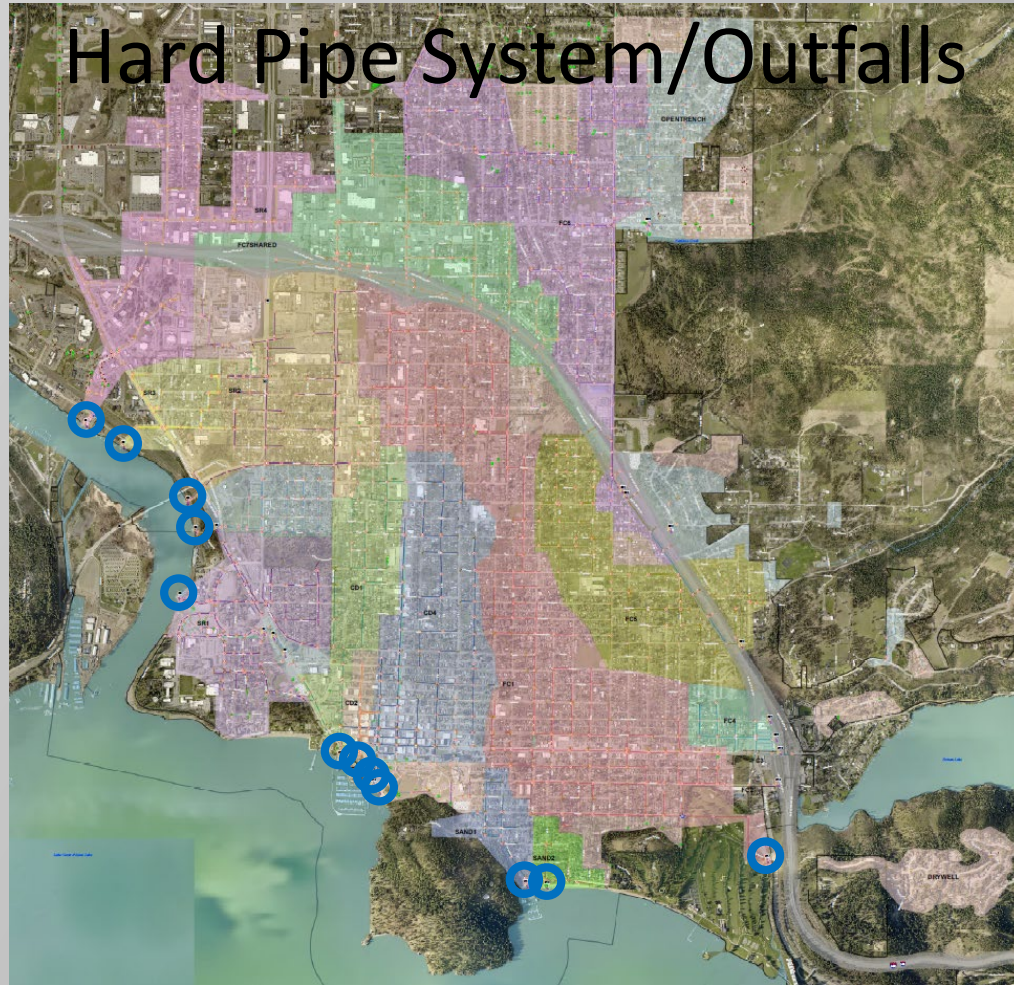




Hard Pipe System/Outfalls



Hard Pipe System/Outfalls





Leading Idaho Initiative

Coeur d'Alene Lake Phosphorus Reduction Projects

Project Ranking	Project Name	Applicant
1	City of Coeur d'Alene Stormwater Outfall Volume Reduction - Sanders Beach	City of Coeur d'Alene
2	City of Kellogg Sustainable Stormwater Improvements – Outfall to Bunker Creek	City of Kellogg
3	Coeur of d'Alene Stormwater Outfall Volume Reduction - Independence Point	City of Coeur d'Alene
4	City of Kellogg Sustainable Stormwater Improvements - North Kellogg Outfall	City of Kellogg
5	Northside Stormwater Drainage Improvements - Marmot Trail Road	East Side Highway District
6	Coeur d'Alene River Stabilization	Kootenai-Shoshone Soil and Water Conservation District (SWCD)
7	St. Joe River Reduction of Phosphate	Benewah SWCD
8	City of Coeur d'Alene Stormwater Outfall Volume Reduction - Mullan Ave	City of Coeur d'Alene
9	Mica Creek Watershed Agricultural Sediment Reduction and Improvement Project Phase 2	Kootenai-Shoshone SWCD
10	City of Kellogg Sustainable Stormwater Improvements - Hill Street Outfall	City of Kellogg
11	City of Plummer and Stimson Lumber Company Municipal Wastewater Reuse Project	City of Plummer

Sanders Beach/11th Street Marina Outfall





NOT
APPROVED
PRELIMINARY
FOR
CONSTRUCTION

AGENCY REVIEW

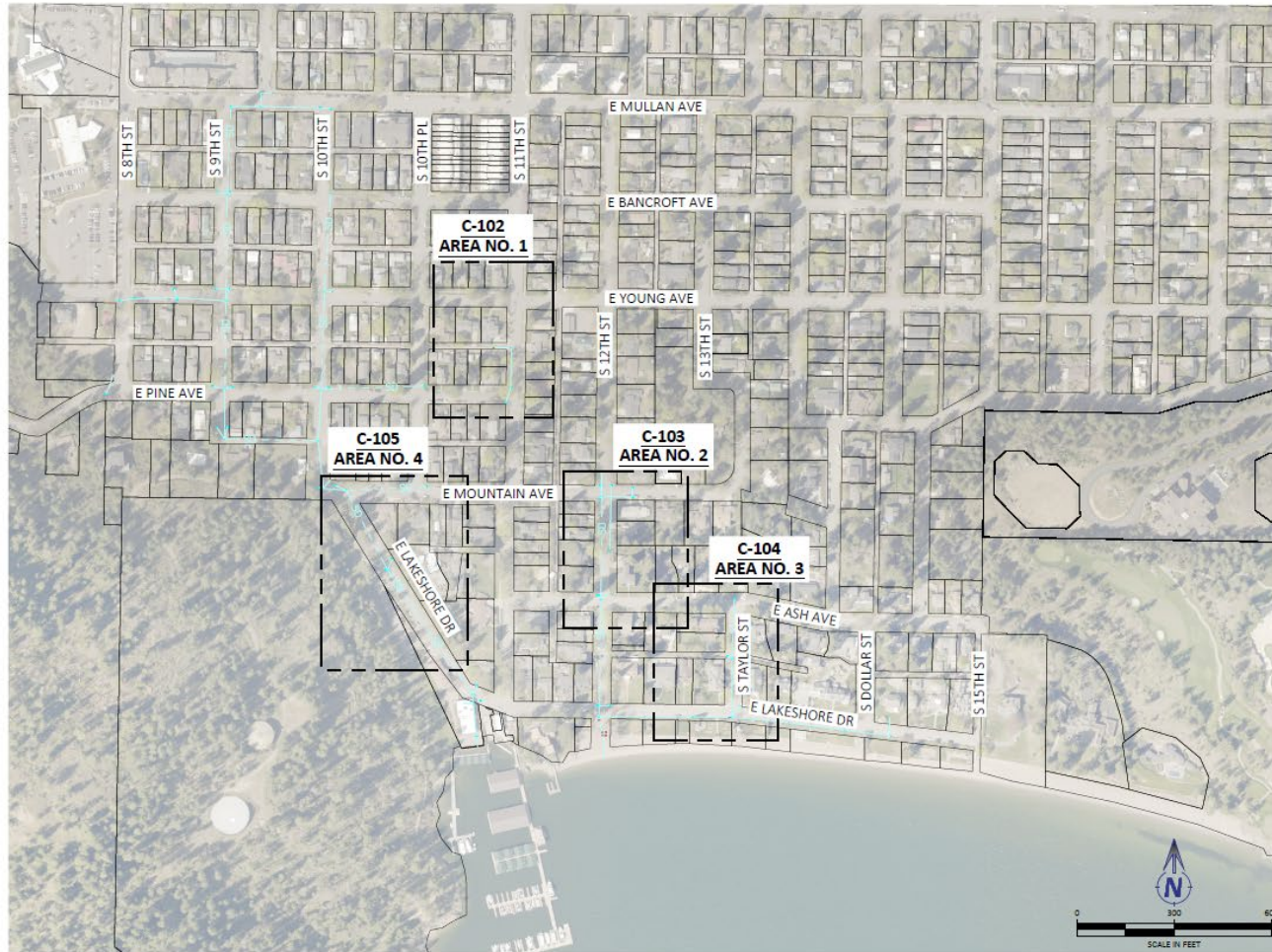
SCALE: (SEEKEY ONLY)

DWG: m21014 c-101 plan.dwg
PROJECT NO: M21014
DRAWN BY: B.SOUVENIR
CHECKED BY: J.SHAH
DATE: 2022/07/20

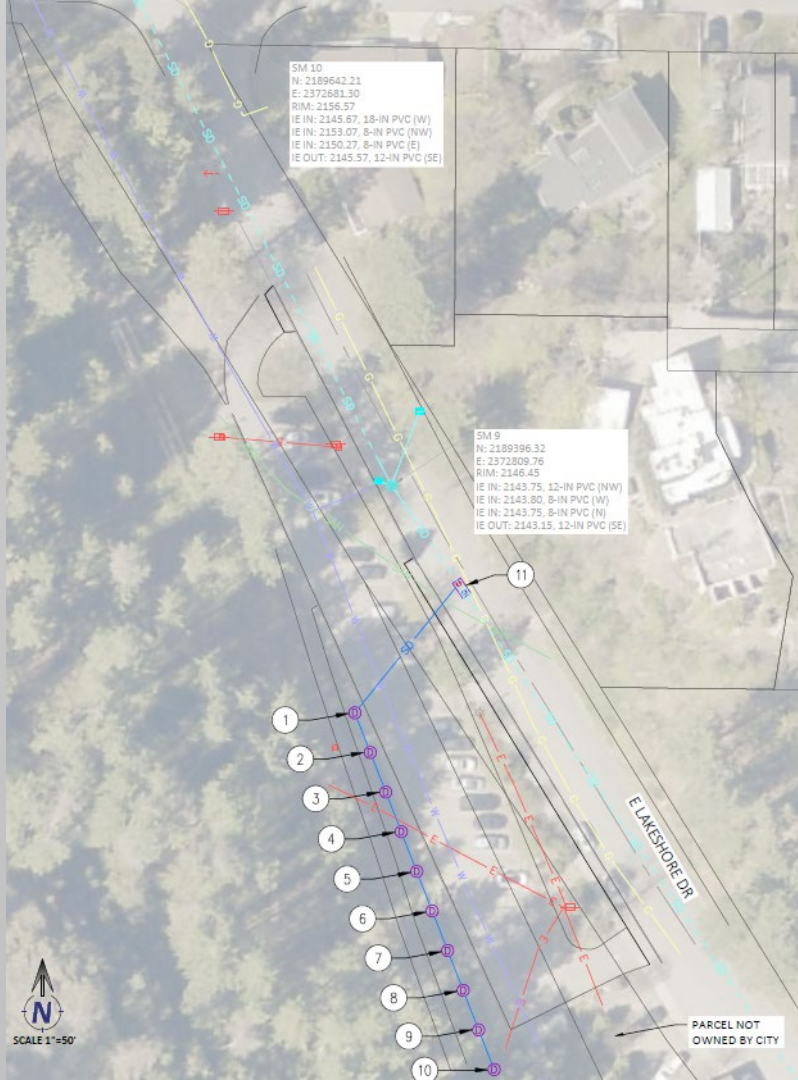
© 2022 | ALL RIGHTS RESERVED
REVISIONS
NO. DATE BY DESCRIPTION

AREA LOCATION
MAP

DRAWING:
C-101
SHEET:04 OF 16



Plot Date: 7/20/2022 4:15 PM. Printed By: Brentt Covert
 File: Z:\DOCUMENTS\PROJECTS\M21014\SANDERS BEACH STORMWATER\CD\PLAN SHEETS\M21014 C-001 PLAN.DWG



Independence Point Outfall



Mullan Ave Outfall





Lacrosse Ave Swale









Outdoor Classroom Swale







Railroad Bed



Pipe to Swale



Overflow



US-95/Northwest Boulevard Swale

