



RESTORATION PARTNERSHIP

COEUR D'ALENE BASIN

REBECCA STEVENS- COEUR D'ALENE TRIBE

ISPE 9/8/22

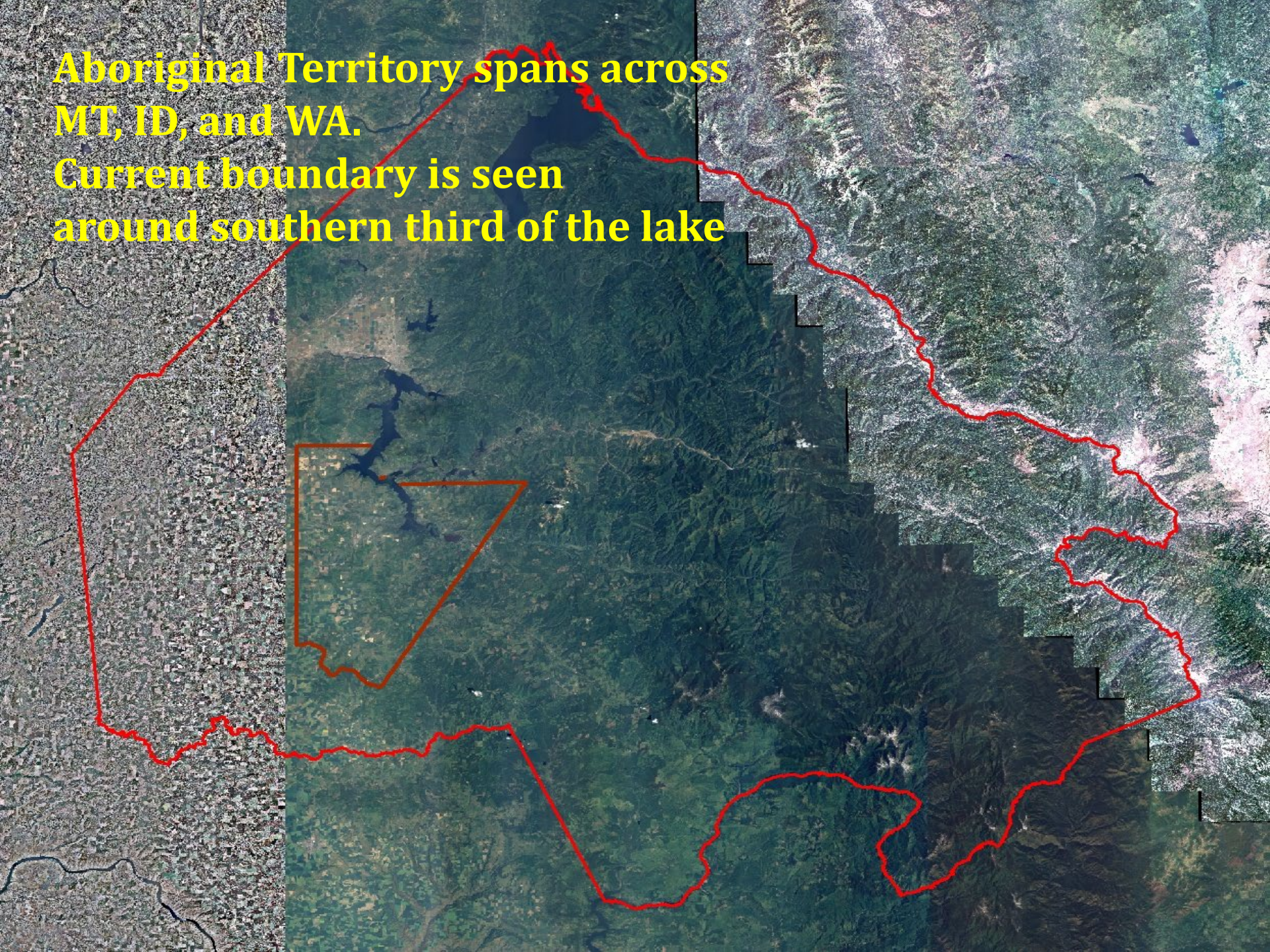


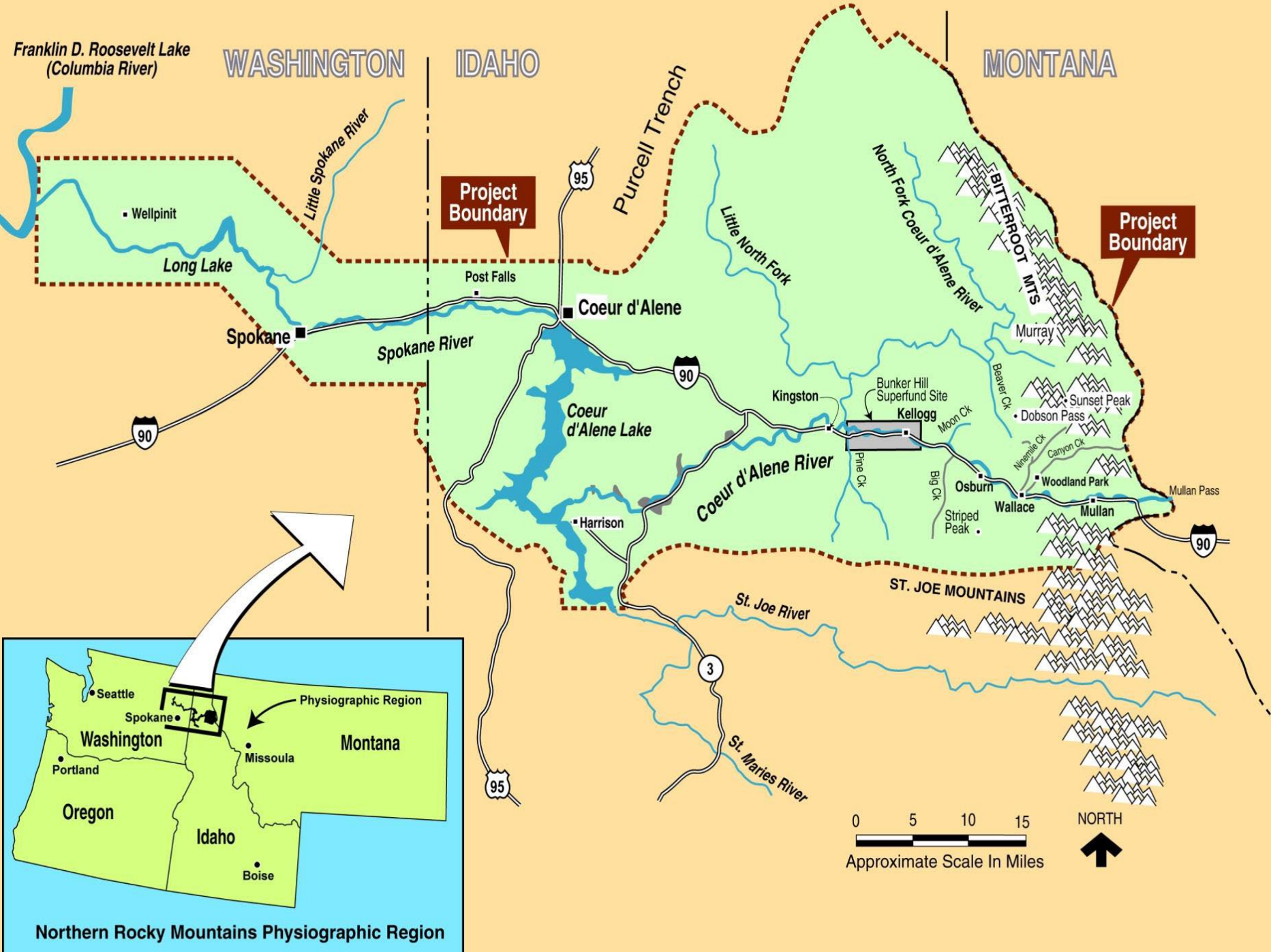
- History
- Natural Resource Injuries
- Damage\$ & Settlements
- Restoration Plan
- Natural Resource Restoration Projects





**Aboriginal Territory spans across
MT, ID, and WA.
Current boundary is seen
around southern third of the lake**





Franklin D. Roosevelt Lake
(Columbia River)

WASHINGTON

IDAHO

MONTANA

Project Boundary

Project Boundary

Wellpinit

Long Lake

Little Spokane River

Purcell Trench

95

Post Falls

Coeur d'Alene

90

Spokane

Spokane River

Coeur d'Alene Lake

Coeur d'Alene River

Kingston

Bunker Hill Superfund Site
Kellogg

Moon Ck

Beaver Ck

Dobson Pass

Sunset Peak

Ninemile Ck

Canyon Ck

Big Ck

Osburn

Striped Peak

Wallace

Mullan

Mullan Pass

90

Harrison

St. Joe River

ST. JOE MOUNTAINS

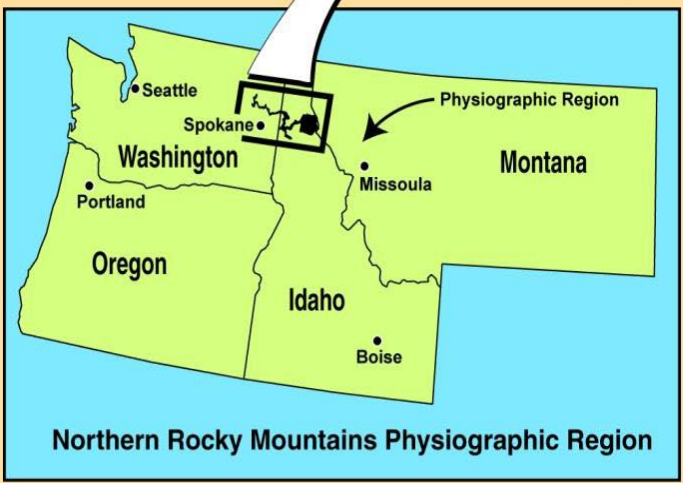
3

St. Maries River

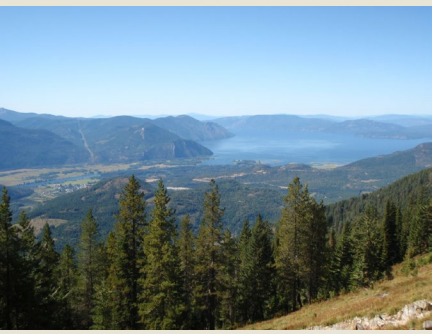
0 5 10 15

NORTH

Approximate Scale In Miles



Northern Rocky Mountains Physiographic Region



Historical Land Uses

- 1880's Silver and Gold discovered near Prichard, ID
- Logging surrounding hill sides for mines and railroads
- 1886-1992 UPRR hauled ore down river, across the Lake and along lakeshore; tailings used in rail bed
- Mine tailings discharged directly into floodplains

Mining in the Silver Valley





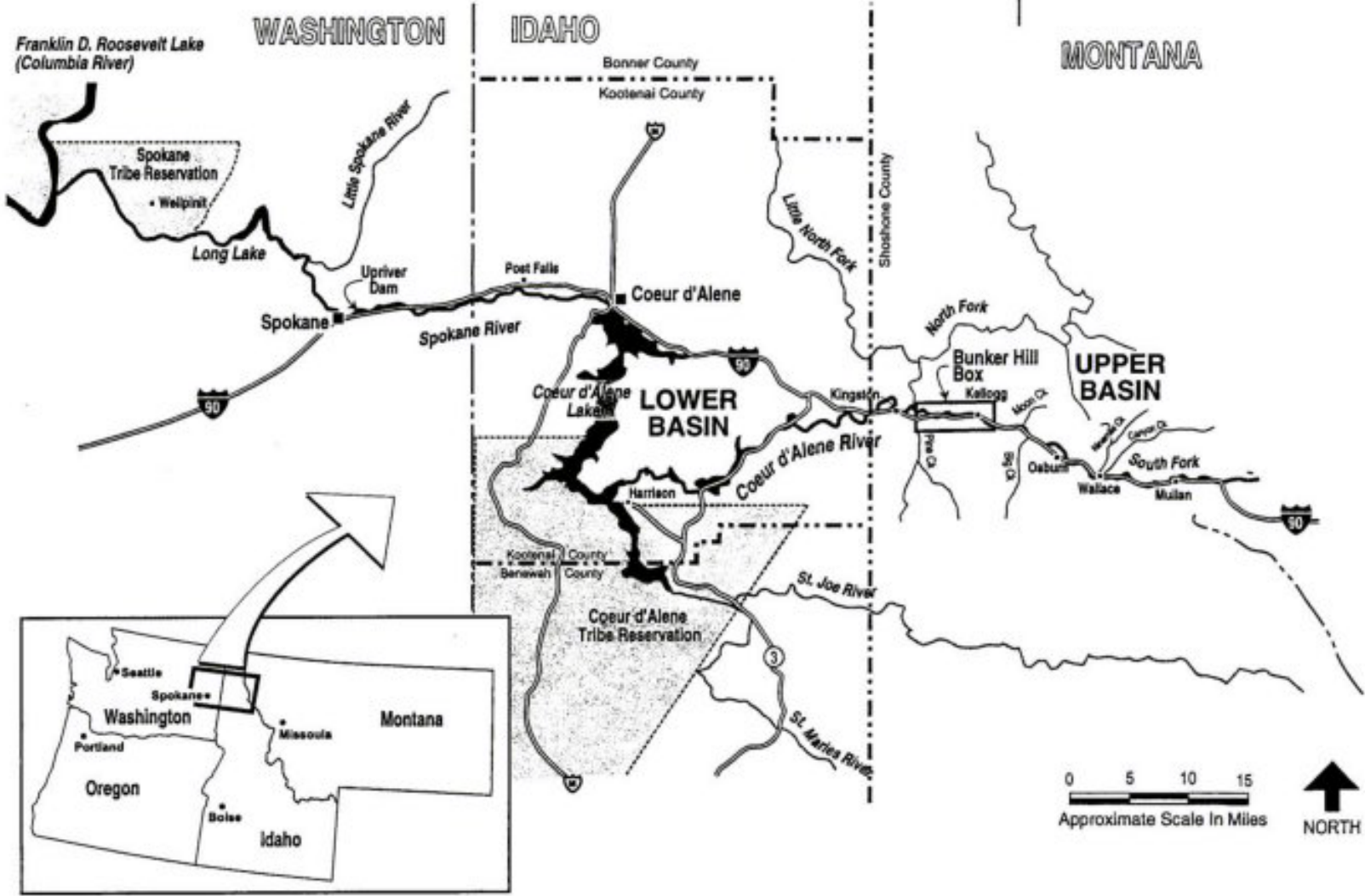


CERCLA

Comprehensive Environmental Response & Compensation Act

Superfund

Clean-up authority for EPA, BLM,
USFS (Federal Trustees) & Tribes



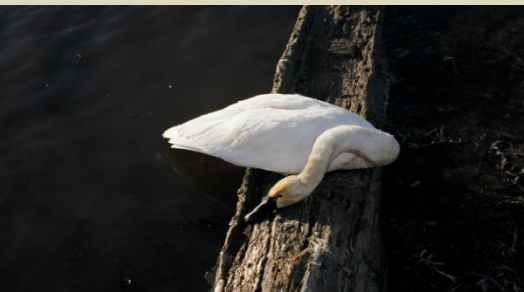




NRDAR

Natural Resource Damage Assessment and Restoration

Goal: “Restore, Rehabilitate, Replace,
&/or Acquire the equivalent of
injured natural resources”





“Collect that irrefutable data
and let no stone be left
unturned” - Henry SiJohn,
Tribal Elder and Leader

*Meanwhile, EPA continues to issue RODs to address
remediating the basin for human health concerns.*



Water , Soils, and Sediment

Migratory Waterfowl



Fish and Aquatic Life

Photo courtesy of Pat Clayton

Photo courtesy of Pat Clayton



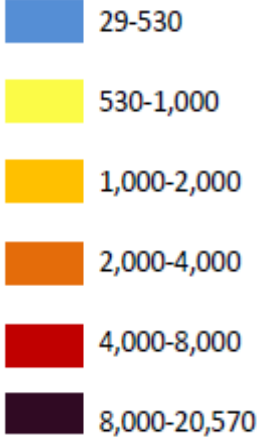
Settlements, Bankruptcy, etc.

- 1995- Gulf Pintlar
 - 2000-UPRR
- 2001-Sunshine Mine (bankruptcy, NSR's)
- 2001-Coeur Callahan
 - 2003-ASARCO

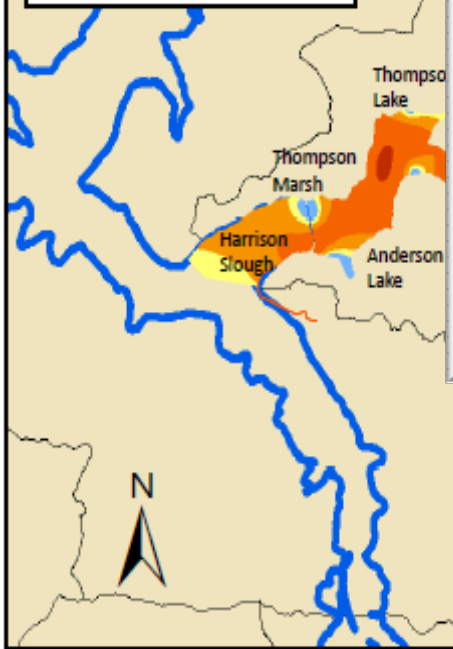


Coeur d'Alene Lateral Lakes

Lead Sediment Concentrations
(parts per million)



Tier 1 wetlands- based on
Birds/year and metals



Restoration Partnership

Natural Resource Trustees / Trustee Council

U.S. Dept. of the Interior U.S. Dept. of Agriculture

Coeur d'Alene Tribe

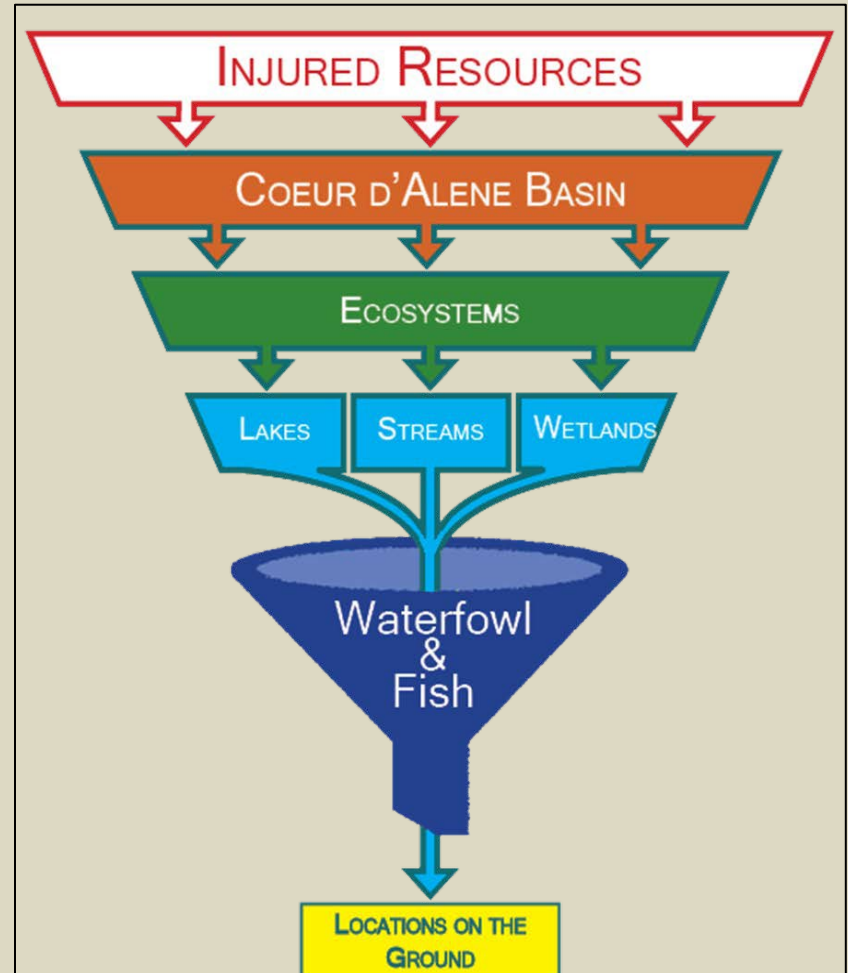
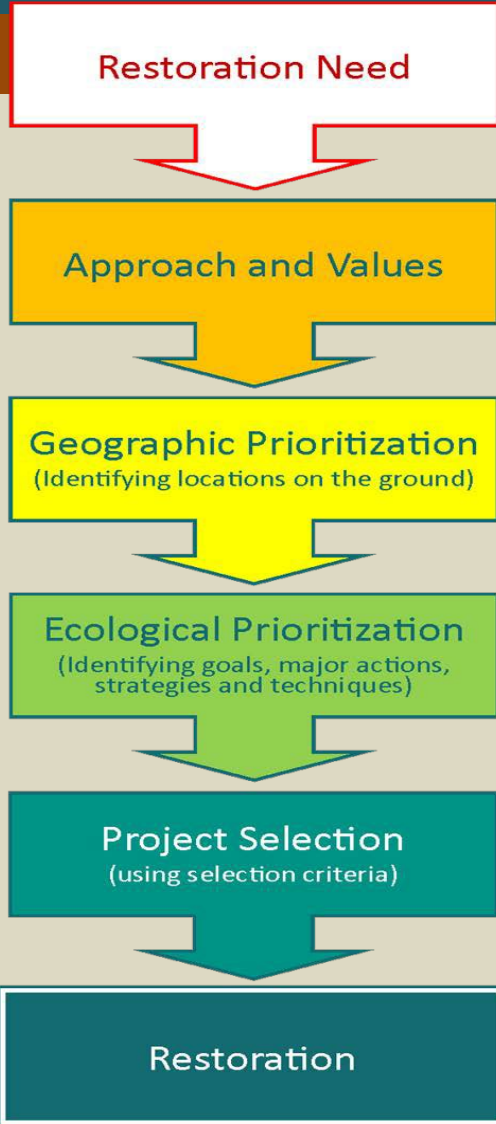
State of Idaho

Representative Governments/Agencies





Restoration Plan







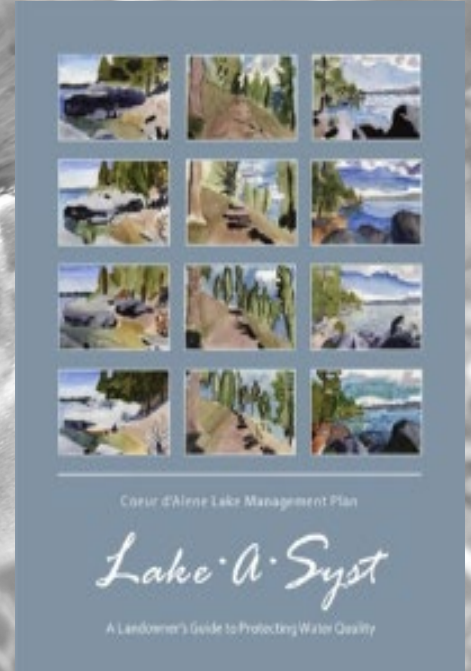
Restoration compares to Remediation



Coeur d'Alene Lake Monitoring



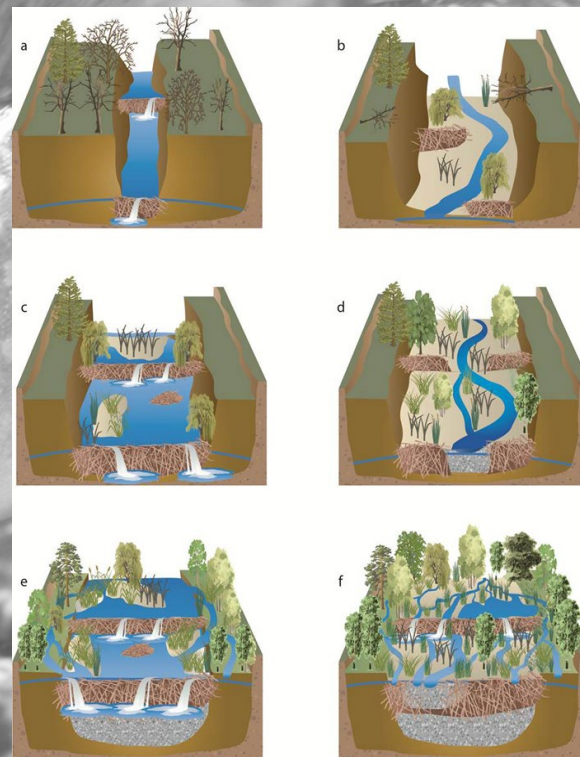
Outreach and Education



Lake Creek Stream enhancements



Culturally Significant Plants- *ut qhesu'lumkhw*



Hepton Lake Breach Repair- *Gut*

Hnch'mchinmsh -



Scarification Water Temps 1-4°C

Hepton Native Willow Nursery



Put and Take Fishery-





Canyon Marsh

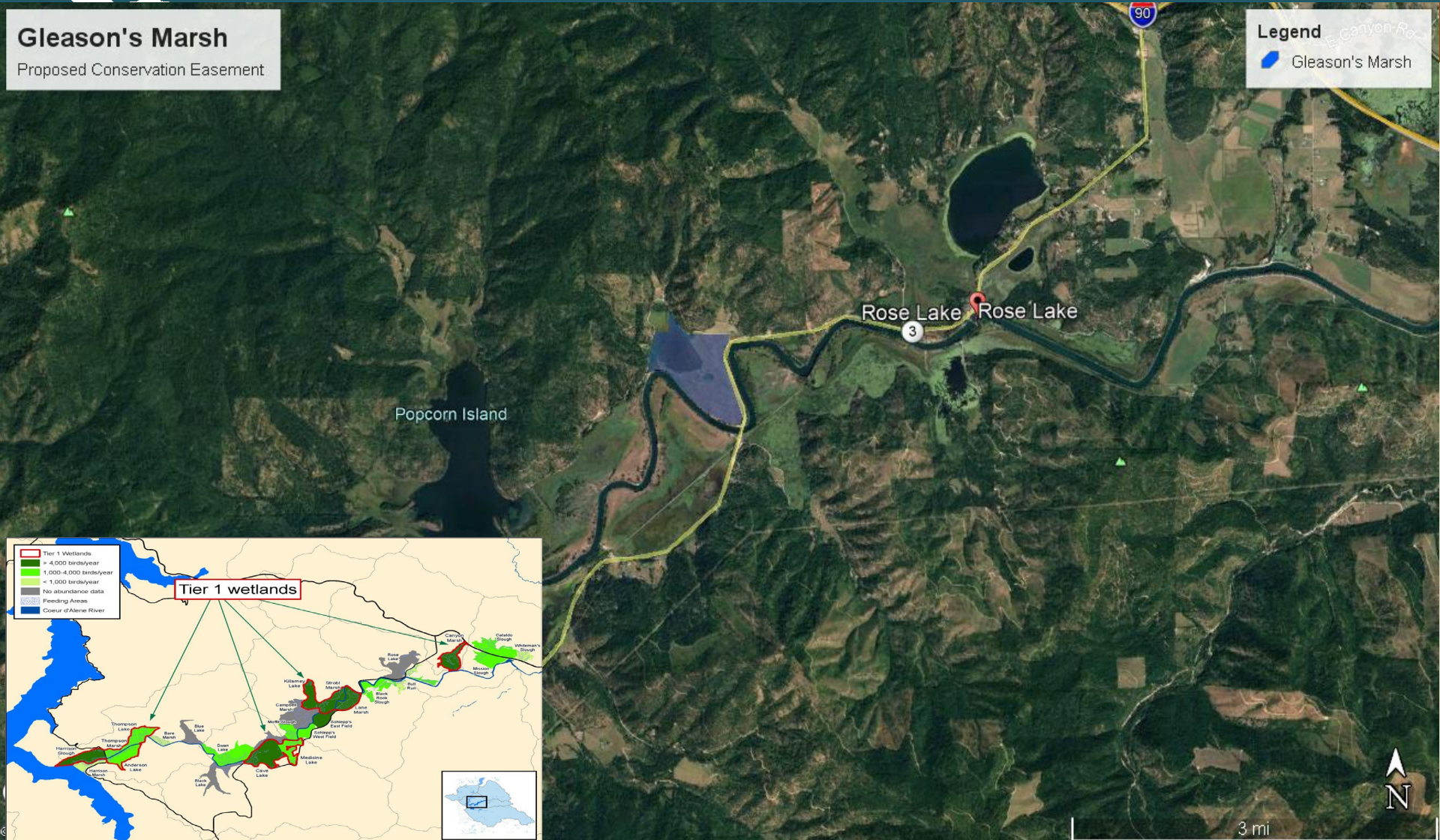




Gleason's Marsh

Gleason's Marsh
Proposed Conservation Easement

Legend
Gleason's Marsh





Gleason's Marsh





State of Idaho – DEQ Projects

Wolf Lodge Cr.



Prichard Cr.



St. Joe River



North Fork Cda R.





State of Idaho – IDFG Projects

Gene Day Pond



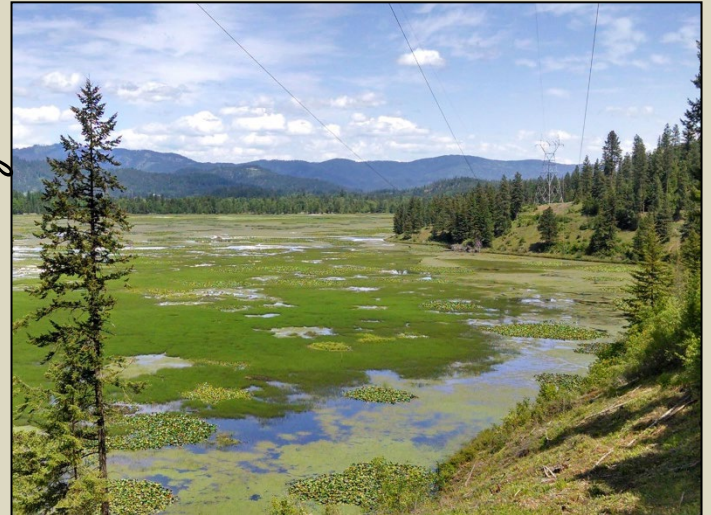
Gray's Meadow



Trapper Cr.



Black Rock Slough





Red Ives Dam Removal

Cougar Bay Wetlands





Future Solicitation & Selection Process



Questions?



Rebecca Stevens
Restoration Coordinator-Coeur d'Alene Tribe
rstevens@cdatribe-nsn.gov
www.restorationpartnership.org